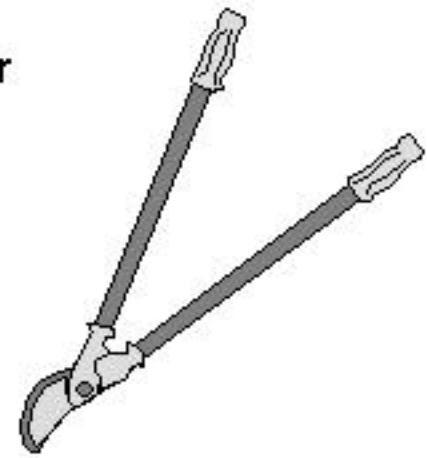
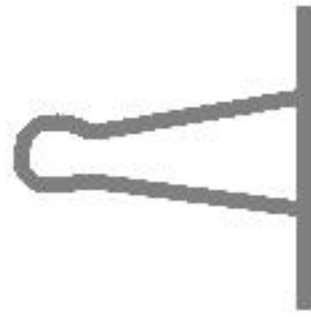


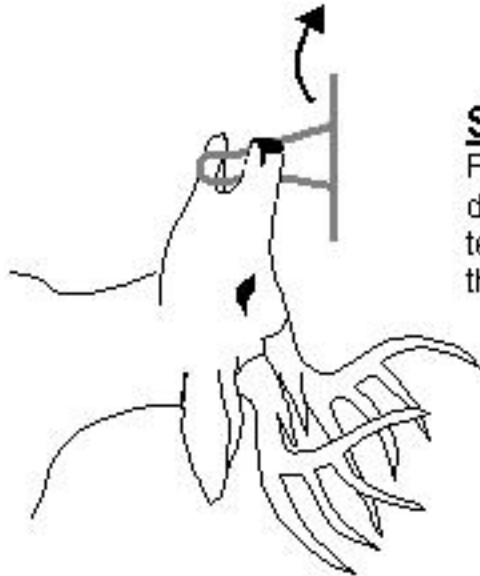
## **INSTRUCTIONS FOR PROPER JAW EXTRACTION**

There are two essential tools necessary for proper jaw extraction: G&R Products Jaw Extractor and pruning shears (the type used for cutting small tree limbs).

**G&R Products Jaw Extractor**

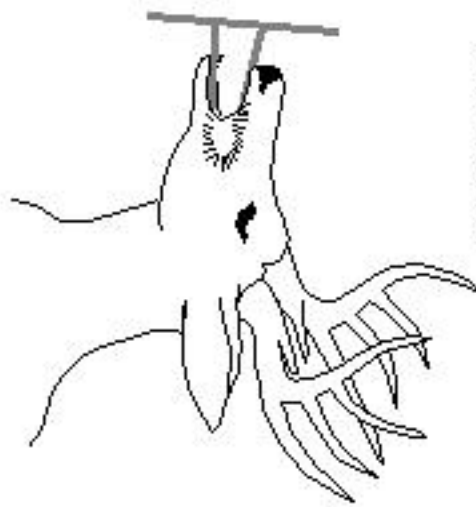


**Metal Pruning Shears**



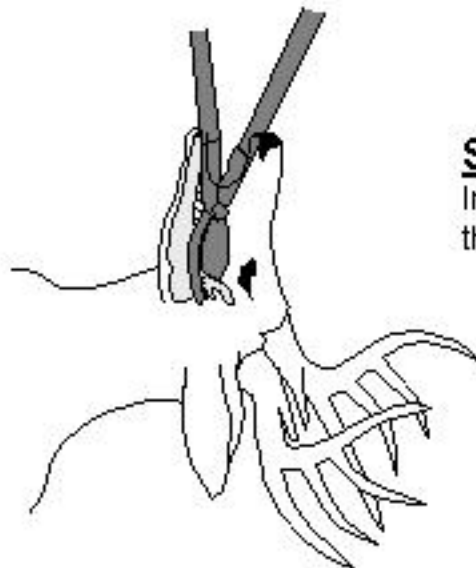
### **STEP 1**

Place the back of the deer's head on a flat surface and open the deer's mouth by inserting the jaw extractor between the front teeth and premolars. Rotate the extractor 90 degrees to open the mouth.



### **STEP 2**

Insert the jaw extractor between the cheek and jawbone. Push the jaw extractor down toward the base of the jaw to free skin and muscle attached to the lower jaw along gum line.



### **STEP 3**

Insert the closed pruning shears into the deer's mouth with the curve of the blade facing inward. Open the shears and cut behind the last molar.



### **STEP 4**

After removing the shears force the small end of the jaw extractor through the cut made in step 3. Apply pressure by placing one foot on the deer's neck and pull the tool out of the deer's mouth along the underside of the jawbone removing the muscles. The jawbone will break near the incisors (front teeth) and can be lifted out.

***To determine the age of your deer, compare the removed jaw to the Deer Aging Tool.***